

The Greater Norwich Local Plan

IS BEING PRODUCED BY



IT WILL

- Contain a vision and objectives for the area and strategic policies.
- Identify land for a range of uses, such as housing, employment, leisure, and retail.
- Identify land that should be protected from development.
- Outline how we will monitor the plan's effectiveness.

ENVIRONMENT



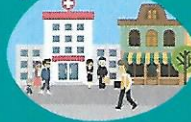
HOMES



INFRASTRUCTURE



COMMUNITIES



DELIVERY



ECONOMY



Get involved. Please respond as the GNLPP can only succeed if the views of the public, developers, services and infrastructure providers are understood. The Regulation 18 consultation will run from 8 January to 15 March 2018.

Have
your
say

To take part in the consultation visit:

www.gnlp.org.uk